

# APPROVED SHEET

CUSTOMER: \_\_\_\_\_

CUSTOMER P/N: \_\_\_\_\_

JWD P/N: S12502-2BA

REV: R4

DESCRIPTION: 10/100 BASE-TX

Meet AEC-Q200 Standard

Automotive Application

CUSTOMER APPROVAL		COMPANY APPROVAL	
INSPECTED BY:		ISSUED BY:	Bob
CHECKED BY:		CHECKED BY:	Mingrui, Song
APPROVED BY:		APPROVED BY:	Focus, Wang
APPROVED DATE:		ISSUED DATE:	2020/9/17

Please Return One Copy to Us After Approved,TKS! (承认后请回寄一份,谢谢)

四川经纬达科技集团有限公司

Sichuan Jingweida Technology Group Co., Ltd

地址: 绵阳高新区防震减灾产业园

ADD: Protecting Against and Mitigating Earthquake Disasters Industrial Park,  
High-tech Zone, Mianyang, Sichuan 621000 CHINA.

TEL: +86-816-2561202 FAX: +86-816-2562518

E-MAIL: myjwd@myjwd.com

WEB: www.myjwd.com

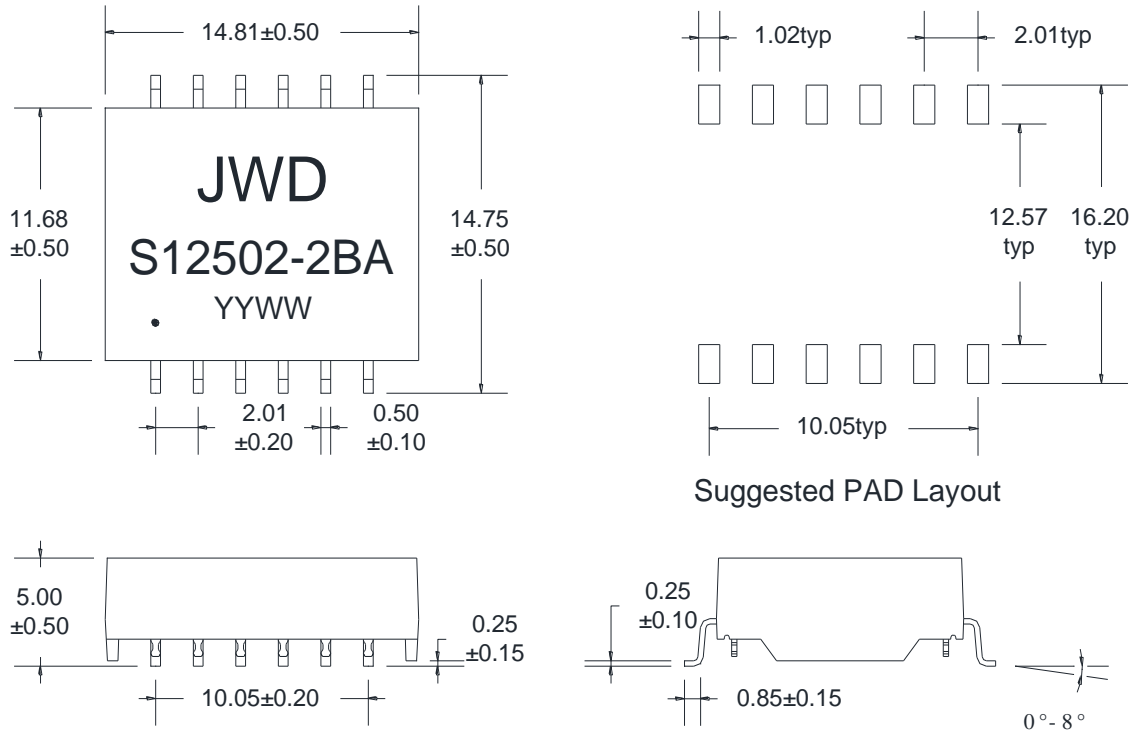




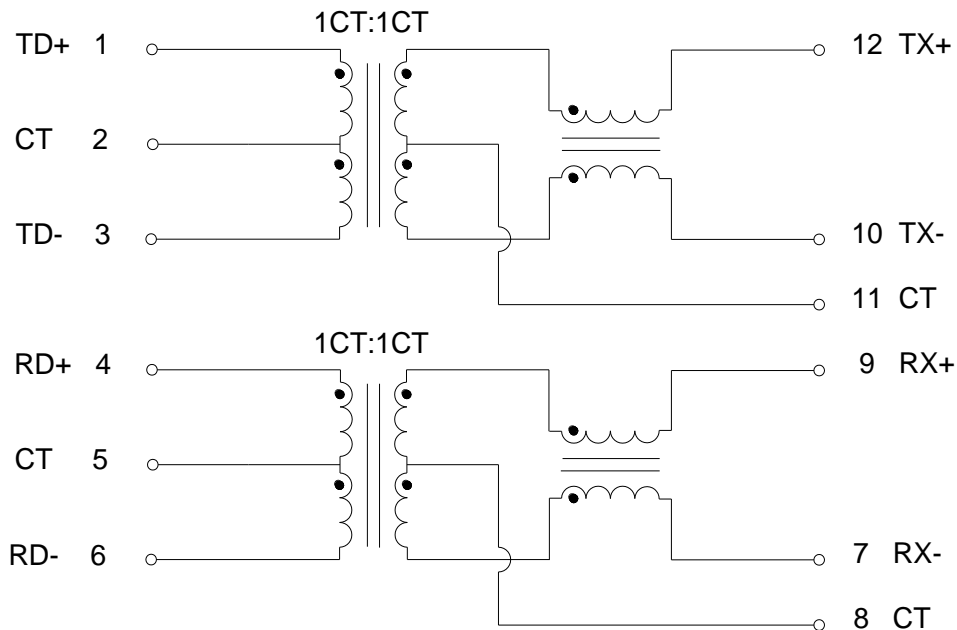
# 四川经纬达科技集团有限公司

Sichuan Jingweida Technology Group Co., Ltd

## A. MECHANICAL(unit:mm)



## B. SCHEMATICS



DESCRIPTION	JWD P/N	SPEC NO.	R4
10/100 BASE-TX	S12502-2BA		PAGE: 1/3



# 四川经纬达科技集团有限公司

Sichuan Jingweida Technology Group Co., Ltd

## C. ELECTRICAL SPECIFICATIONS @25°C

1. OCL: 600uH Min with 100 KHz, 0.1V @25°C
2. Leakage Inductance:0.5uH Max @ 100KHz, 0.1V
3. DCR: 1400mΩ Max
4. Turns Ratio: 1CT:1CT±5%
5. Insertion Loss: -0.5 dB Max @ 4 MHz
6. Return Loss: -20 dB Min @ 4 MHz
7. Cross Talk: -30 dB Min @ 100 MHz
8. Common Mode Rejection: -30 dB Min @ 1-100 MHz
9. Differential to common rejection ratio: -30 dB Min @ 1-100MHz
10. Isolation Hipot: 3700VAC 1mA 2S or 4300VDC 1mA 60S
11. Meet AEC-Q200 Standard
12. Operating temperature -40°C to +125°C
13. Storage Temperature(With Package): +10°C to +40°C
14. Storage Temperature(Without Package, Just For Components): -40°C to +125°C

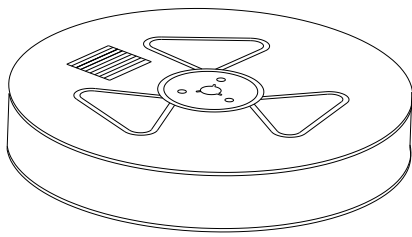
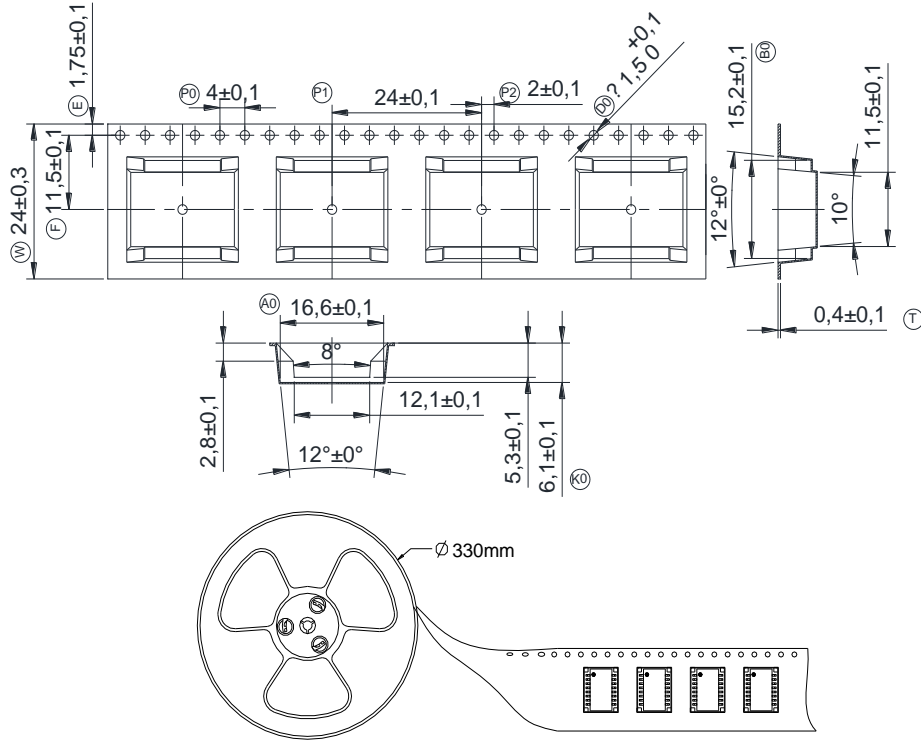
DESCRIPTION	JWD P/N	SPEC NO.	R4
10/100 BASE-TX	S12502-2BA		PAGE: 2/3



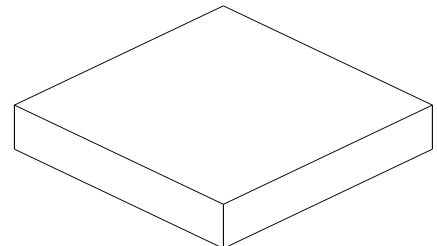
四川经纬达科技集团有限公司



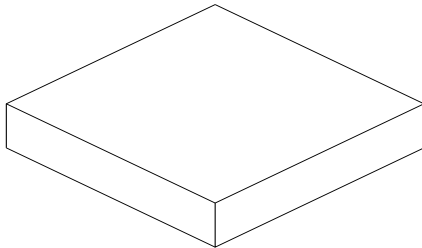
D. PACKAGE INFORMATION



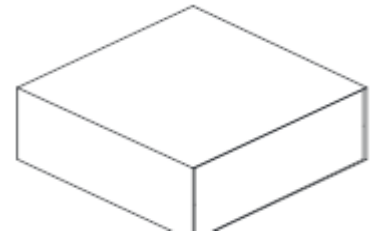
Three Reel



Inner Carton



Two Inner Carton



Export Carton

Package Quantity:

One Reel=300Pcs

One Inner Carton=300\*3=900Pcs

One Export Carton=900\*2=1800Pcs

DESCRIPTION	JWD P/N	SPEC NO	R4
10/100 BASE-TX	S12502-2BA		PAGE: 3/3