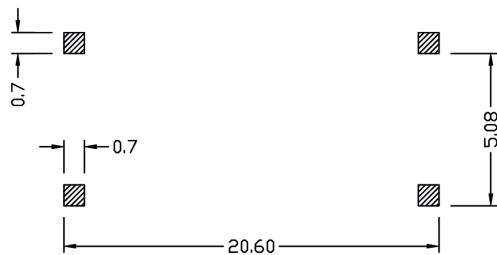
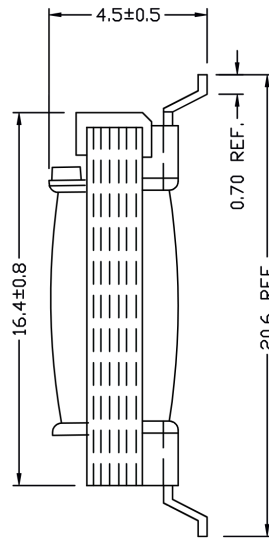
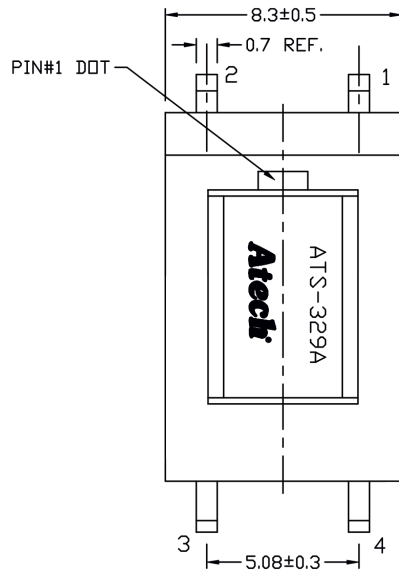
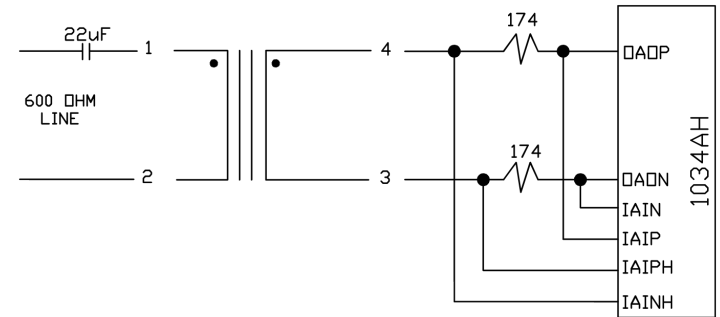
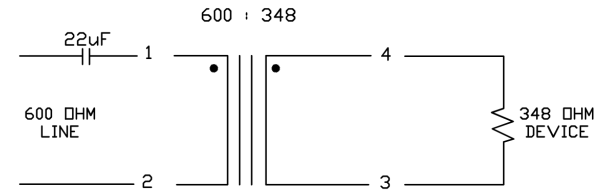


REACH & RoHS  
COMPLIANT

REV.	ECN / DESCRIPTION	BY	DATE
A0	NEW	MQ.Cui	2023.03.02



FOOT PRINT



ELECTRICAL CHARACTERISTICS :

(FOR 1034AH V.90,MEET IEC 950)

- D.C.R. : PIN 1-2 = 135 OHM MAX.  
PIN 3-4 = 160 OHM MAX.
- INDUCTANCE (@1KHZ, 1Vrms LP) : PIN 1-2 = 2.5Hy MIN.
- INSERTION LOSS (@1KHZ, 0dBm) : PIN 1-2 = 3.0dB MAX.
- FREQ. RESP. (REF. 1KHZ) : @200HZ-4KHZ = ± 0.15dB
- RETURN LOSS (REF. 600 OHM) : @200HZ = 30dB MIN.  
@1KHZ = 30dB MIN.  
@4KHZ = 20dB MIN.
- URNS RATIO : PIN 1-2 : PIN 4-3 = 1 ± 1%
- LONGITUDINAL BAL. = 60dB MIN. (@200-4KHZ)
- T.H.D. (@600HZ,-10dBm) = -78dB MAX.
- HI-POT (@1650VAC, 1mA, 2SEC.) PRI. - SEC.
- LEAD-FREE.



苏州沃虎电子科技有限公司

Tel:4001048018 Http://www.wohu-tek.com

Part Number	Impedance PRI:SEC	Type&Size	Mounting	Hi-Pot (Vrms)	Inductance	Turns Ratio (Line:Device)	Dimension L/W/H(mm)
ATS-329AN	600:348	EL-08	SMD(Low profile)	1650	2.5H Min	1:1	20.6/8.5/4.5