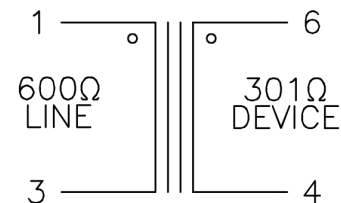
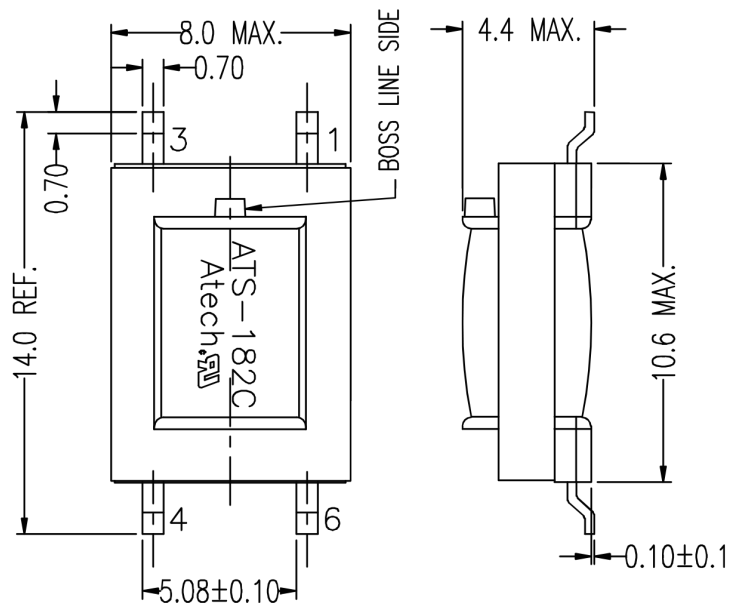


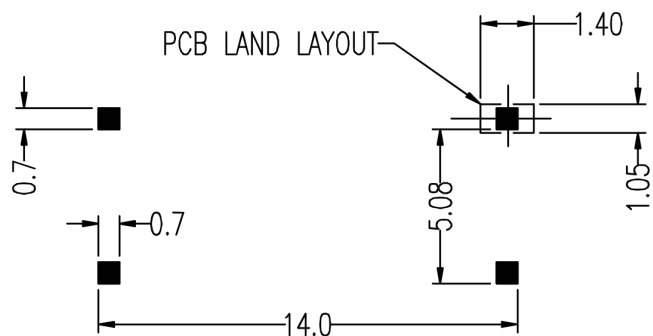
REACH & RoHS  
COMPLIANT

REV.	ECN / DESCRIPTION	BY	DATE
A0	NEW	MQ.Cui	2023.03.02



ELECTRICAL CHARACTERISTICS: (TRUE V.34 FOR SMT)

- DCR : PIN 1-3 =  $150\Omega \pm 10\%$  PIN 4-6 =  $150\Omega \pm 10\%$
- INDUCTANCE (@250Hz, 0.5Vrms, PARALLEL) : 1-3 = 4.0H MIN.
- IMPEDANCE (@1KHz, 0dBm, 6-4 W/H 301Ω) : 1-3 =  $600\Omega \pm 2\%$
- INSERTION LOSS =  $3.3 \pm 0.25\text{dB}$  (@1KHz, 0dBm, W/H 301Ω LOAD)
- FREQ. RESP. (@300Hz TO 4KHz, REF. 1KHz) =  $\pm 0.1\text{dB}$
- RETURN LOSS @300Hz = 30dB MIN. @1KHz = 35dB MIN.  
@4KHz = 35dB MIN.
- TURN RATIO =  $1:1 \pm 1\%$
- POLARITY = PIN 1-6 INPHASE
- LONGITUDINAL BAL. = 70dB MIN. (@200Hz TO 4KHz)
- T.H.D (@600Hz, -10dBm) = -82dB MAX.
- HI-POT = 1250 VAC, 1mA, 2SEC. (PRI.-SEC.)
- RoHS COMPLIANT



UNLESS OTHERWISE SPECIFIED ALL TOLERANCES ARE  $\pm 0.25$



苏州沃虎电子科技有限公司

Tel:4001048018 Http://www.wohu-tek.com

Part Number	Impedance PRI:SEC	Type&Size	Mounting	Hi-Pot (Vrms)	Inductance	Turns Ratio (Line:Device)	Dimension L/W/H(mm)
ATS-182CR	600:301	EL-08	SMD(Low profile)	1250	4.0H Min	1:1	15.2/8.0/4.4