

NOTE:

- 1.MATERIAL SPECIFICATION:
  - 1.HOUSING:HIGH TEMPERATURE RESISTANT PLASTIC,UL94 V-0.
  - 2.CONTACTS:COPPER ALLOY
  - 3.MID PLATE: STAINLESS STEEL
- 2.PLATING SPECIFICATION:
  - 2-1.CONTACTS:
    - Ni 50u" MIN. UNDER PLATED OVER ALL.
    - Au PLATED ON THE FUNCTIONAL AREA OF CONTACT.
    - (GOLD PLATING THICKNESS FOLLOW THE P/N)
    - GOLD FLASH PLATING ON SOLDER AREA
  - 2-2.FRONT SHELL:
    - Ni 30u" MIN. UNDER PLATED OVER ALL.
- 3.MECHANICAL PERFORMANCE,
  - 3-1.INSERTION FORCE: 0.5~2.0kgf.
  - 3-2.REMOVAL FORCE: 0.8kgf~2.0kgf.
  - 3-3.DURABILITY: 10000 CYCLES.
- 4.ELECTRICAL PERFORMANCE,
  - 4-1. CURRENT RATING:5A  
VOLTAGE RATING:20V
  - 4-2.INSULATION RESISTANCE: 100MΩ MIN
  - 4-3.DIELECTRIC WITHSTAND VOLTAGE,AC 100V FOR 1 MINUTE.
  - 4-4.LOW CONTACT RESISTANCE: INITIAL 40MΩ  
AFTER 50MΩ
5. ENVIRONMENTAL PERFORMANCE:
  - OPERATING TEMPERATURE: -30°C~+80°C.
- 6.IR REFLOW:
  - THE PEAK TEMPERATURE ON THE BOARD SHALL BE MAINTAINED FOR 10 SECONDS AT 260°C.

SECTION B-B  
SCALE 1:1

TOLERANCE UNSPECIFIED

|                  |        |
|------------------|--------|
| .0               | ±0.35  |
| .00              | ±0.25  |
| .000             | ±0.15  |
| X. °             | ±2.00° |
| CUSTOMER DRAWING |        |



苏州沃虎电子科技有限公司

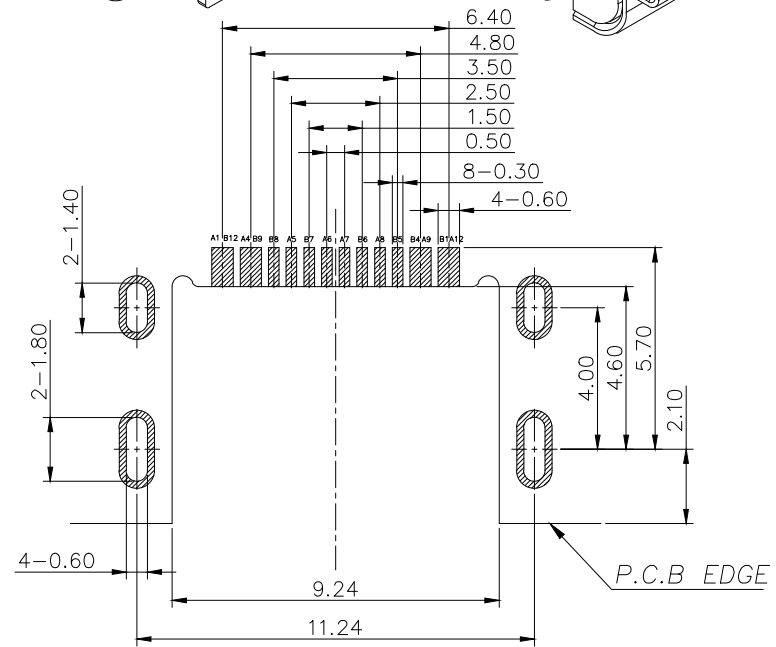
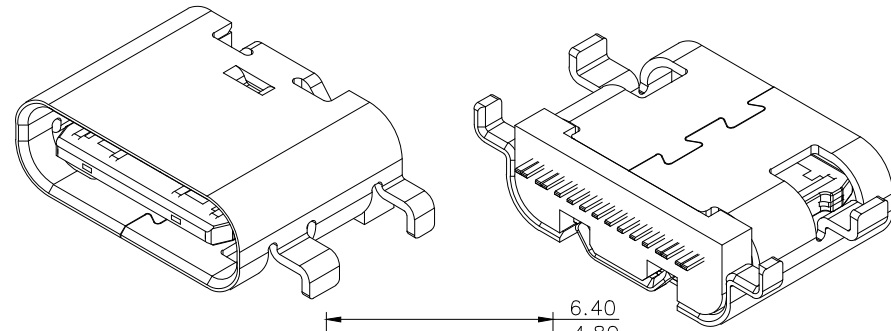
Tel:4001048018 <http://www.wohu-tek.com>

TITLE: TYPE-C 16P 母座L=6.5沉板0.8 CH0.78

|                   |     |            |            |           |                  |
|-------------------|-----|------------|------------|-----------|------------------|
| DRAWN/<br>DATE    | HMY | SIZE:A4    | UNIT:MM.   | PART. NO: | UC.01.31-11-0005 |
| CHECKED/<br>DATE  | LYX | SCALE: 1:1 | PROJECTION |           | REV.: 版本         |
| APPROVED/<br>DATE | LJP | DWG. PATH  |            | 0100-2    | SHEET: 页码        |

USB TYPE-C PIN ASSIGNMENTS

| PIN NUMBER | SIGNAL NAME | PIN NUMBER | SIGNAL NAME |
|------------|-------------|------------|-------------|
| A1         | GND         | B12        | GND         |
| A4         | VBUS        | B9         | VBUS        |
| A5         | CC1         | B8         | SBU2        |
| A6         | Dp1         | B7         | Dn2         |
| A7         | Dn1         | B6         | Dp2         |
| A8         | SBU1        | B5         | CC2         |
| A9         | VBUS        | B4         | VBUS        |
| A12        | GND         | B1         | GND         |



RECOMMEND P.C.B LAYOUT (COMPONENT SIDE)

TOLERANCE FOR PCB LAYOUT IS  $\pm 0.05$

TOLERANCE UNSPECIFIED

|                  |                  |
|------------------|------------------|
| .0               | $\pm 0.35$       |
| .00              | $\pm 0.25$       |
| .000             | $\pm 0.15$       |
| X.°              | $\pm 2.00^\circ$ |
| CUSTOMER DRAWING |                  |

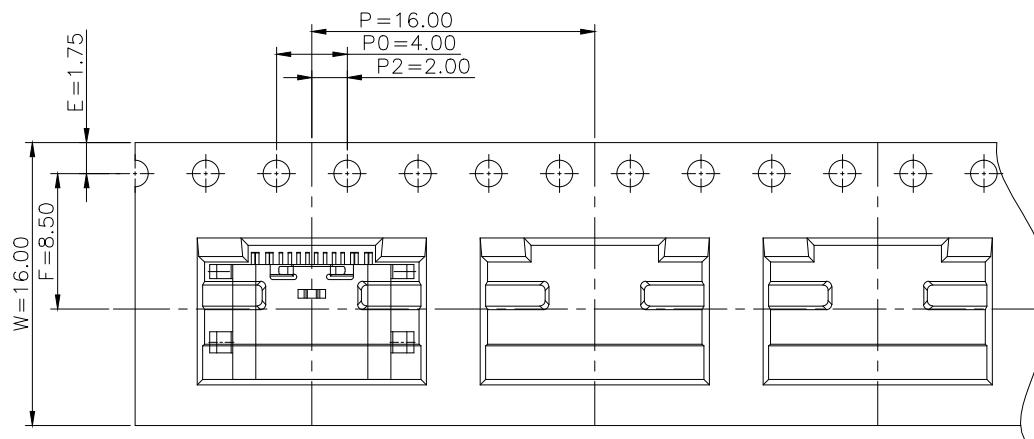
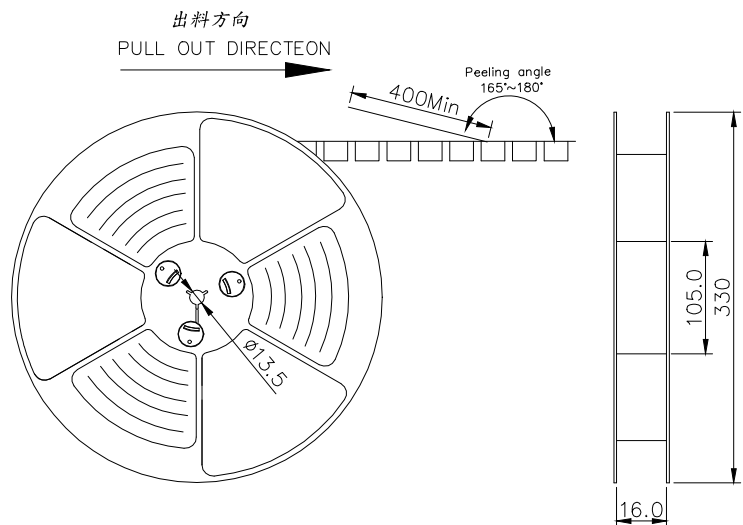


苏州沃虎电子科技有限公司

Tel: 4001048018 <http://www.wohu-tek.com>

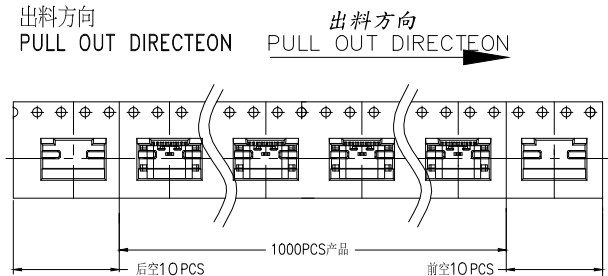
TITLE: TYPE-C 16P 母座 L=6.5 沉板 0.8 CH0.78

|                   |     |            |            |           |                  |
|-------------------|-----|------------|------------|-----------|------------------|
| DRAWN/<br>DATE    | HMY | SIZE: A4   | UNIT: MM.  | PART. NO: | UC.01.31-11-0005 |
| CHECKED/<br>DATE  | LYX | SCALE: 1:1 | PROJECTION |           | REV.: 版本         |
| APPROVED/<br>DATE | LJP | DWG. PATH  | 0100-2     | SHEET: 页码 |                  |

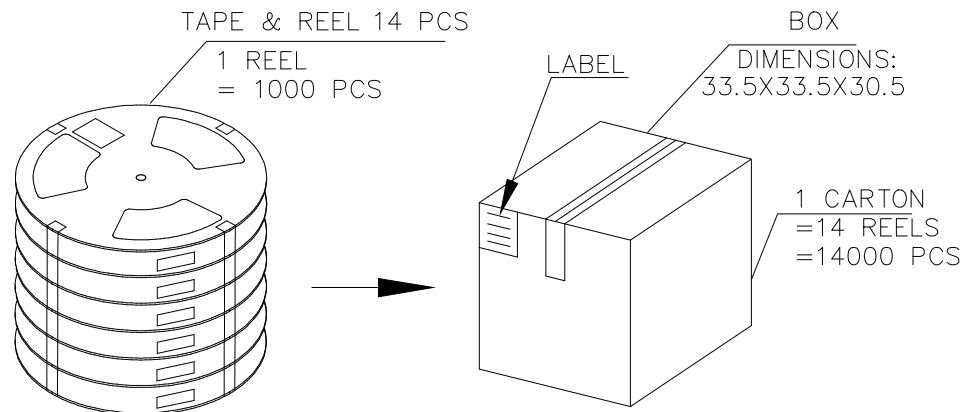


NOTES

1. 帶子引導長度  
LEAD TAPE LENGTH  
出料方向  
PULL OUT DIRECTEON



2. 上帶 剝力力為 : 0.1~1.3N(10.2gf~130gf)  
PEELING OFF FORCE OF TOP TAPE: 0.1~1.3N(10.2gf~130gf)  
出貨運輸過程中一定注意:  
THIS REQUIREMENT SHOULD BE APPLIED AT SHIPMENT:  
卷帶在運輸過程中不能散開  
PEELING OFF SHOULD NOT BE ALLOWED DURING TRANSPORTATION



|                       |        |
|-----------------------|--------|
| TOLERANCE UNSPECIFIED |        |
| .0                    | ±0.35  |
| .00                   | ±0.25  |
| .000                  | ±0.15  |
| X.°                   | ±2.00° |
| CUSTOMER DRAWING      |        |

**WOHU** 苏州沃虎电子科技有限公司  
Tel:4001048018 <http://www.wohu-tek.com>

TITLE: TYPE-C 16P 母座L=6.5沉板0.8 CH0.78

| 包裝明細表 (The detail of the packing) Carton |                         |              |         |                |          |          |
|--|-------------------------|--------------|---------|----------------|----------|----------|
| 產品料號<br>(Product No.)                    | 包裝容量 (Packing Capacity) |              |         | 重量 Weight (Kg) |          |          |
|  | pcs/box                 | boxes/Carton | Pcs/Box | N.W./Pcs       | N.W./Box | G.W./Box |
|  | 1000                    | 14           | 14000   | ----           | ----     | ----     |

|                   |     |            |            |           |                  |          |
|-------------------|-----|------------|------------|-----------|------------------|----------|
| DRAWN/<br>DATE    | HMY | SIZE:A4    | UNIT:MM.   | PART. NO: | UC.01.31-11-0005 |          |
| CHECKED/<br>DATE  | LYX | SCALE: 1:1 | PROJECTION |           |                  | REV.: 版本 |
| APPROVED/<br>DATE | LJP | DWG. PATH  | 0100-2     | SHEET: 页码 |                  |          |